

# Anti-CLDN18.2 hIgG1 Antibody(Zolbetuximab)

## Product information

GM-34137AB-10	10 µg
GM-34137AB-100	100 µg
GM-34137AB-1000	1 mg

## Antibody Information

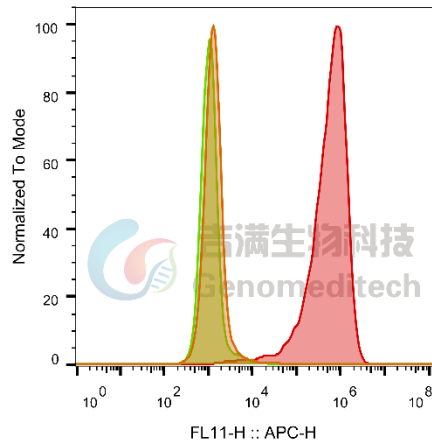
Species Reactivity	Human; Cynomolgus
Clone	Zolbetuximab
Source/Isotype	Monoclonal Human IgG1 /k
Application	Flow Cytometry
Specificity	Detects CLDN18.2
Gene	CLDN18.2
Other Names	/
Gene ID	51208(Human); 9541 (Cynomolgus)
Background	The claudin18.2 (CLDN18.2) protein, an isoform of claudin18, a member of the tight junction protein family, is a highly selective biomarker with limited expression in normal tissues and often abnormal expression during the occurrence and development of various primary malignant tumors, such as gastric cancer/gastroesophageal junction (GC/GEJ) cancer, breast cancer, colon cancer, liver cancer, head and neck cancer, bronchial cancer and non-small-cell lung cancer. CLDN18.2 participates in the proliferation, differentiation and migration of tumor cells. Recent studies have identified CLDN18.2 expression as a potential specific marker for the diagnosis and treatment of these tumors. With its specific expression pattern, CLDN18.2 has become a unique molecule for targeted therapy in different cancers, especially in GC; for example, agents such as zolbetuximab (claudiximab, IMAB362), a monoclonal antibody (mAb) against CLDN18.2, have been developed.
Storage	Store at 2-8°C short term (1-2 weeks). Store at ≤ -20°C long term.Avoid repeated freeze-thaw.
Formulation	Phosphate-buffered solution, pH 7.2.
Endotoxin	< 1 EU/mg, determined by LAL gel clotting assay

Version:3.1 Revision Date:12/25/2023

## Data Examples

### Flow cytometry

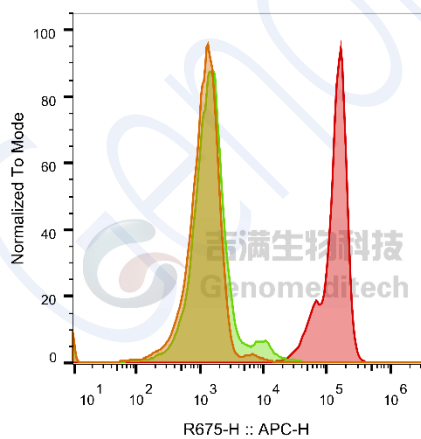
The recommended usage range is 0.5-4  $\mu\text{g}$  per test. H\_CLDN18(isoform2)-eGFP 293 Cell Line (Catalog # GM-C02120) was stained with Anti-CLDN18.2 hlgG1 Antibody(Zolbetuximab) (Catalog # GM-34137AB) or isotype control antibody, followed by anti-Human IgG APC-conjugated Secondary Antibody.



SampleID	Geometric Mean : FL11-H
HEK-293 anti-CLDN18.2+APC-2nd Ab	1357
HEK-293 H_CLDN18.2 H_IgG+APC-2nd Ab	1117
HEK-293 H_CLDN18.2 anti-CLDN18.2+APC-2nd Ab	4.90E5

### Flow cytometry

The recommended usage range is 0.5-4  $\mu\text{g}$  per test. Cynomolgus\_CLDN18.2-eGFP CHO-K1 Cell Line (Catalog # GM-C07800) was stained with Anti-CLDN18.2 hlgG1 Antibody(Zolbetuximab) (Catalog # GM-34137AB) or isotype control antibody, followed by anti-Human IgG APC-conjugated Secondary Antibody.



SampleID	Geometric Mean : R675-H
CHO-K1 anti-CLDN18.2+APC-2nd Ab	1087
CHO-K1 Cyno_CLDN18.2 H_IgG+APC-2nd Ab	1427
CHO-K1 Cyno_CLDN18.2 anti-CLDN18.2+APC-2nd Ab	124276

Fig . FACS